

For more information go to www.barbourproductsearch.info

 **Jasper**™
Profiled flat balusters

Quality you can hold on to.

Sapphire Eastern Park Farm Lane Nuthampstead Herts SG8 8LZ
call 01763 847 020 fax 01763 847 030 email sales@sapphireeastern.com

Sapphire Midlands 10 Thorpe Way Banbury OX16 4SP
call 01295 265 500 fax 01295 265 040 email sales@sapphiremidlands.com

Sapphire Scotland 1 Blackhouse Circle Peterhead AB42 1BN
call 01779 476 089 fax 01779 471 796 email sales@saphirescotland.co.uk

Sapphire Southern 11 Arkwright Road Reading RG2 0LU
call 0118 986 5410 fax 0118 986 5420 email sales@saphiresouthern.com

www.sapphirebalustrades.com

 **SAPPHIRE**™
balustrades



Elegance and creative scope

Jasper is a recently introduced flat-baluster system with slim, contemporary sightlines. It works equally well in both level and raking situations.

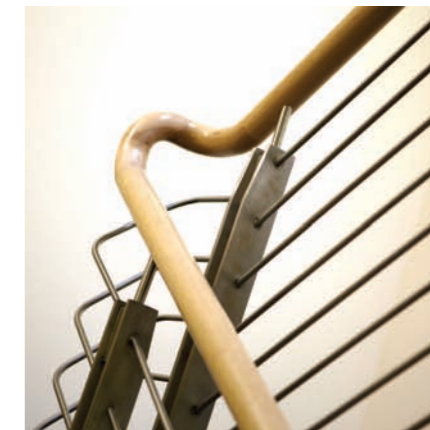
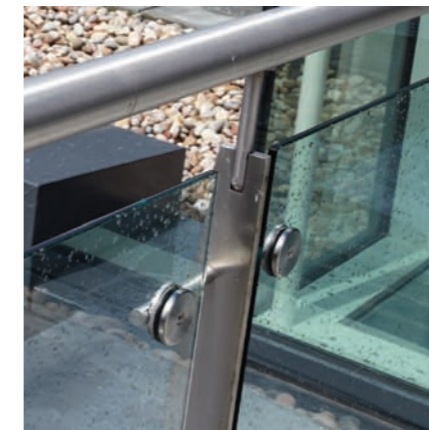
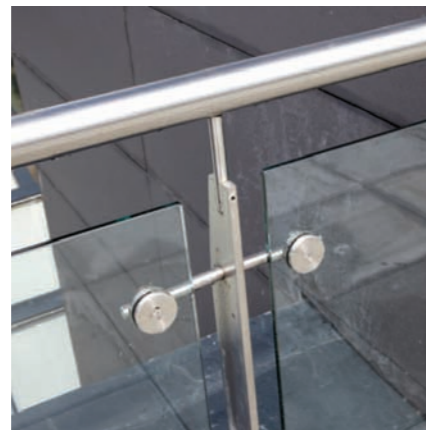
Jasper offers a choice between single and double flats, available in either stainless or powder-coated steel. Each one is individually made, not extruded, so you can create bespoke feature shapes through either laser or water-jet cutting.

Jasper can be combined with any handrail system: stainless steel (Onyx, page 42), powder-coated steel (Opal, page 74) or Natura hardwood (page 106).

The potential for value engineering allows design detail to be reduced, optimising the cost.



 > product credentials



Twin-flat and single-flat variants

Compatible with the full range of infills (glass, tension wire, vertical or horizontal rods, mesh) or can be used without an infill

Combine with stainless steel, powder-coated steel or hardwood handrails

Loadings can be increased by increasing baluster section sizes

Meets all relevant UK regulations

All balusters are custom built, making Jasper the ideal choice for bespoke designs without dramatic cost implications

profiles

Single flat baluster
Double flat baluster
Custom flat baluster

material type

Aluminium
Mild steel
Stainless steel

finishes

Polyester powder coated
Satin polish
Bright polish

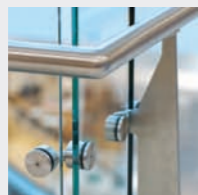
More in-depth technical information is available in the Jasper technical brochure.

John Lewis > Cardiff

Retail

This installation for leading retailer John Lewis comprised Jasper balustrades to the main atrium and Onyx balustrades on two customer staircases. The project features a custom baluster profile.

Architect
Ericsson Architects
Contractor
Wates Retail

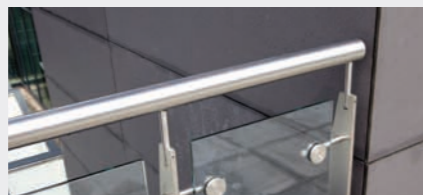


Justice Mill Lane > Aberdeen

Commercial

Justice Mill Lane is an office-space complex in Aberdeen, designed around semi-public courtyards. We provided Jasper balustrades for external and internal walkways, creating the perfect blend of clean, crisp lines and hard-wearing practicality.

Architect
Richard Murphy Architects
Contractor
Miller Construction

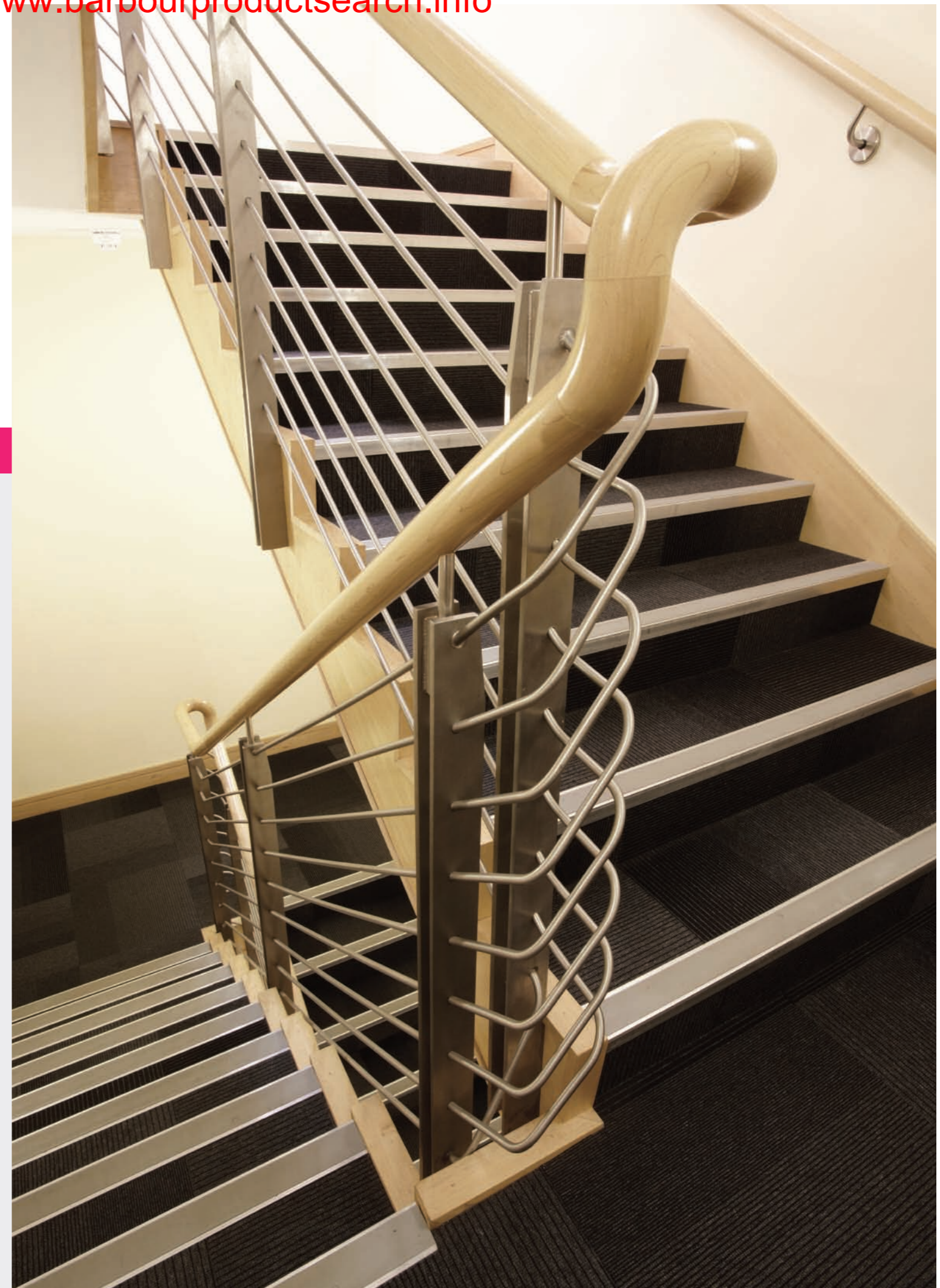
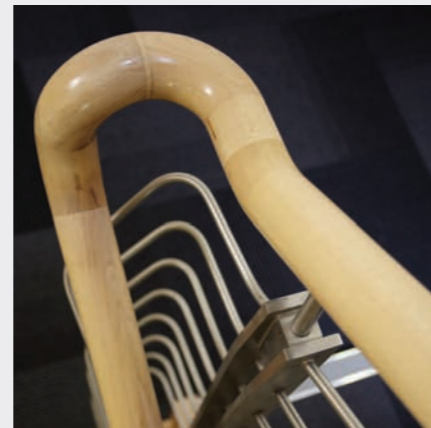
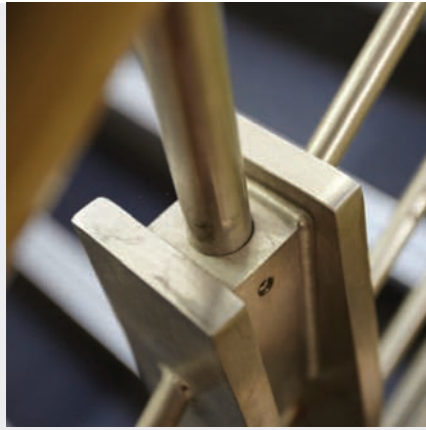


Albyn Grove > Carlton Rock

Commercial

This commercial installation features a Jasper balustrade with midrails and a hardwood handrail, as well as twin-flat balusters. The final result displays perfect visual harmony between the handrail and the stairs, as well as superior ergonomics for users of the space.

Architect
TCD Architects
Contractor
Space Solutions

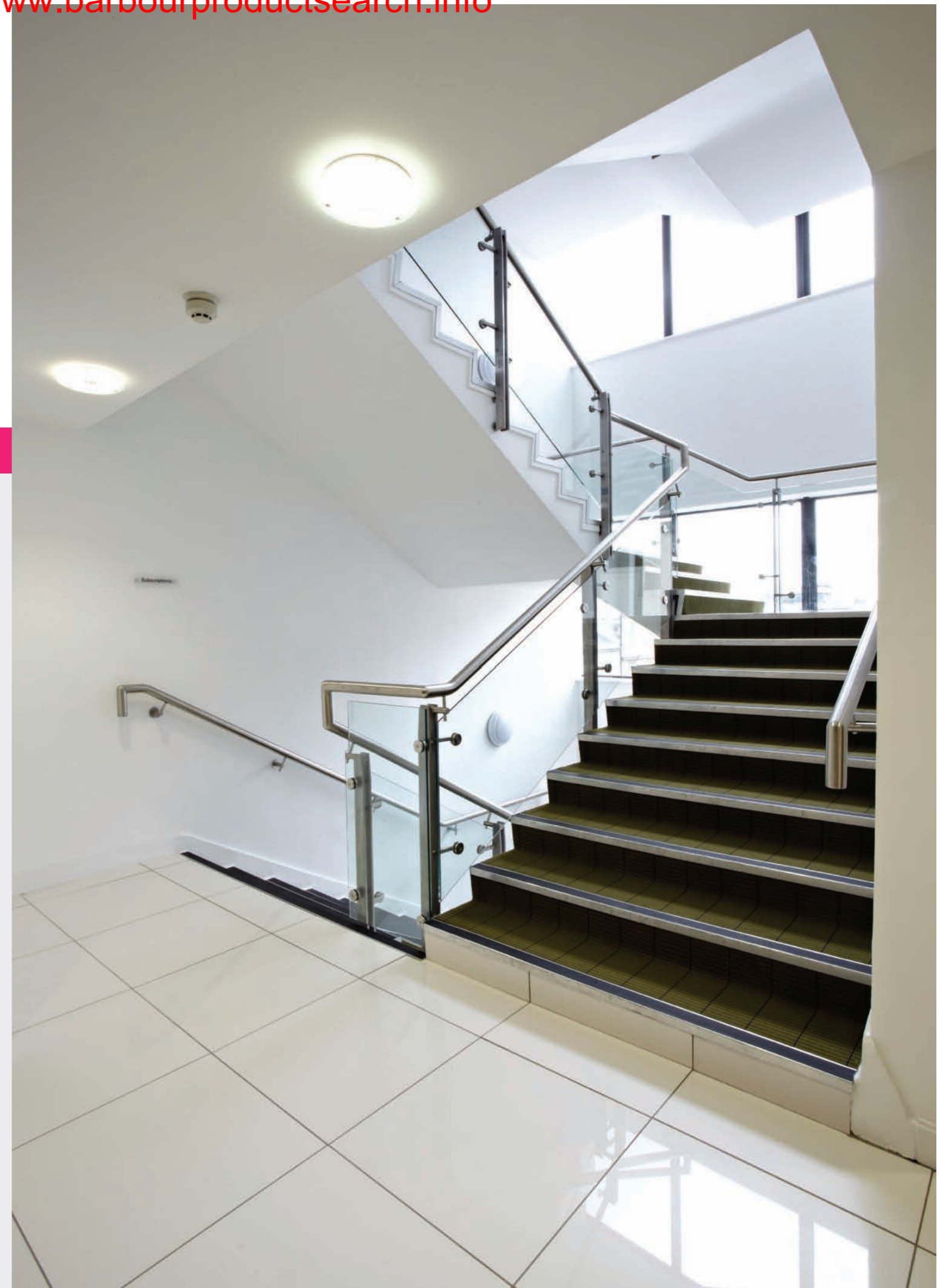
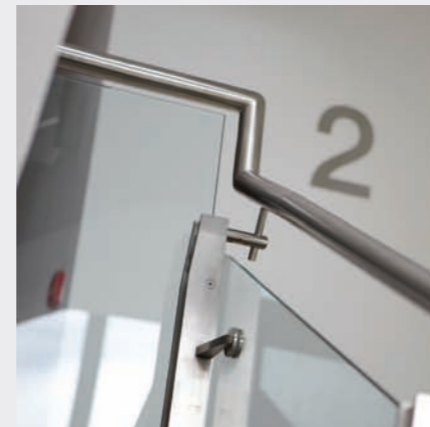
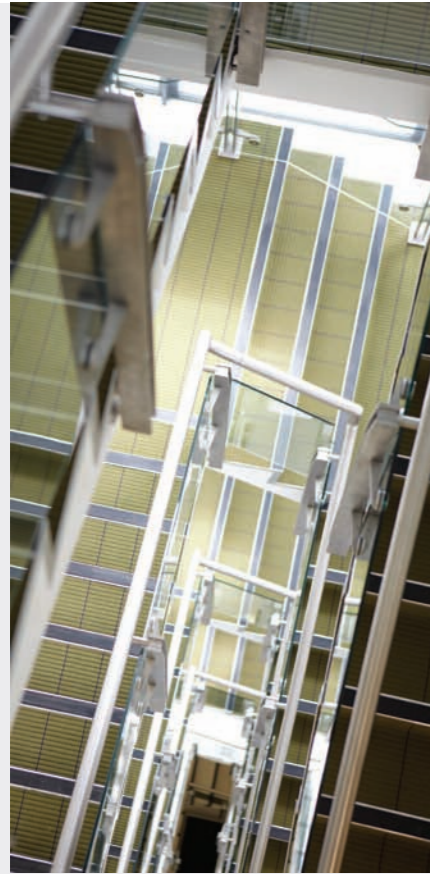


John Smith House > Glasgow

Commercial / Community

For this commercial commission we supplied and fitted a Jasper balustrade for the staircase with a glass infill and twin-flat balusters. The completed space is beautifully clean, with ultra-modern lines and maximum light.

Architect
Metro Design
Contractor
Metro Design



Balustrade enhancements > overview



Armourex

> Advanced coating

Armourex is a uniquely formulated coating offering enhanced performance and extended life. The coating was developed around three core needs:

Anti-graffiti > Graffiti is easy to remove without solvents. Armourex is also flame-resistant.

Antibacterial > Contains an active agent to inhibit growth and reduce spread of bacteria.

Scratch resistant > With a 118 Buchholz hardness, a Clemen hardness of 3500 and a thermal conductivity of 0.3, the coating offers great scratch resistance and a 'warm to the touch' feel.



Natura

> Hardwood handrails

Natura hardwood handrails provide a soft natural complement to components and balustrades from our other ranges. Combine it with stainless steel or glass for a contemporary, warm and welcoming feel.

Our unique high-strength jointing methods mean no core rail is required, dramatically improving the aesthetic impact of the range and enabling smooth, flowing corners and bends – just as with our core ranges. Natura fixings are hidden from view where possible.



Naturex

> Woodgrain coating

Naturex is a highly realistic woodgrain coating, available as an alternative to powder coating. The coating can be made to match any species of timber.

Naturex is suitable for both internal and external situations, offering the same look as timber but with superior durability (25-year lifespan) and no need for regular maintenance. A wide choice of grains and colours can be chosen, all of which deliver further cost savings. Naturex can be applied to both balusters and handrails.



Lunalite

> LED

LED lighting embedded into the underside of the handrail can be used to illuminate walkways for safety or just to create a stunning visual effect.

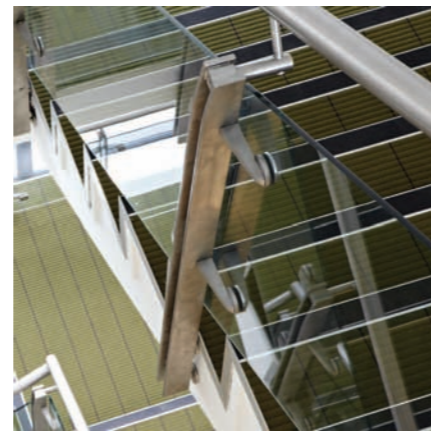
LEDs are available in white, red, blue, green, yellow, purple or constantly changing colours.



Gates

We offer lockable gates in stainless steel, glass and other materials to match our balustrades. Gates provide useful access control in retail, hospitality and other environments, while preserving visual continuity. One-way access gates can also be provided.

Balustrade systems > overview



Crystal

Light, space and style

Crystal is ideal for large atria and other high-profile applications, with a design that's been refined through years of careful development. Its structural glass panels provide a perfectly clear view and an understated lightness that ideally complements both modern and classic buildings.

> [Frameless structural glass](#)

Onyx

Versatility and resilience

Onyx, our stainless steel range, offers a great-looking, low-maintenance solution that's ideal for communal areas in retail, commercial, residential, education and leisure settings.

> [Stainless steel tubular balusters](#)

Jasper

Elegance and creative scope

Jasper is a recently introduced flat-baluster system with slim, contemporary sightlines. It works equally well in both level and raking situations. The range can easily incorporate customised baluster profiles.

> [Profiled flat balusters](#)

Opal

Value and quality

Opal's attractive, head-wearing polyester powder-coated finish delivers a superb balance of durability, quality and value, providing a visual complement or contrast in any environment.

> [Coated tubular balusters](#)

Aluma

Strength and simplicity

Aluma is a cost-effective aluminium balustrade system with a crisp, contemporary flavour. It takes its visual style from a range of aluminium extrusions in various shapes, sizes, finishes and colours. Handrails are joined with hidden fixings to give a perfectly clean line and uncluttered appearance.

> [Aluminium section balusters](#)

For more information go to www.barbourproductsearch.info

Contact
Sapphire



Sapphire Eastern Park Farm Lane Nuthampstead Herts SG8 8LZ
call 01763 847 020 fax 01763 847 030 email sales@sapphireeastern.com

Sapphire Midlands 10 Thorpe Way Banbury OX16 4SP
call 01295 265 500 fax 01295 265 040 email sales@sapphiremidlands.com

Sapphire Scotland 1 Blackhouse Circle Peterhead AB42 1BN
call 01779 476 089 fax 01779 471 796 email sales@sapphirescotland.co.uk

Sapphire Southern 11 Arkwright Road Reading RG2 0LU
call 0118 986 5410 fax 0118 986 5420 email sales@sapphiresouthern.com

www.sapphirebalustrades.com

18 Sapphire Balustrades Contact Sapphire

Sapphire reserve the right to alter specification and designs without prior notice.

© All rights reserved, no part of this publication may be reproduced in any material form (including photocopying or storing it in any medium by electronic means and whether or not transiently, or incidentally to some other use of this publication) without the written permission of the copyright owner. Application for the copyright owner's permission to reproduce any part of this publication should be addressed to Sapphire.

MD3101115

Designed and produced by Aura: www.studioaura.com

ACP4472/01.11